

## DNA Fingerprinting of Single Colonies of *Helicobacter pylori* from Gastric Cancer Patients Suggests Infection with a Single Predominant Strain

STEPHAN MIEHLKE,<sup>1</sup> RACHEL THOMAS,<sup>2</sup> OSCAR GUITERREZ,<sup>3</sup> DAVID Y. GRAHAM,<sup>2</sup>  
AND MAE F. GO<sup>2\*</sup>

Medical Department I, Technical University Hospital, Dresden, Germany<sup>1</sup>; Department of Medicine, Veterans Affairs Medical Center, Baylor College of Medicine, Houston, Texas<sup>2</sup>; and University Hospital San Juan de Dios, Bogota, Colombia<sup>3</sup>

Received 3 June 1998/Returned for modification 18 August 1998/Accepted 13 October 1998

**In each of six gastric cancer patients, repetitive extragenic palindromic PCR DNA fingerprints of 18 single colonies of *Helicobacter pylori* from the gastric antrum, corpus, and cardia were identical and matched that of the parental isolate. In three additional gastric cancer patients, 17 of 18 single-colony DNA fingerprints were identical to each other and to the DNA fingerprint of the corresponding parental isolate.**

The large degree of genetic heterogeneity among *Helicobacter pylori* strains allows individual clinical *H. pylori* isolates to be reliably distinguishable from one another through the use of DNA fingerprinting methods (1, 7). Repetitive extragenic palindromic (REP) sequences are well-characterized repetitive DNA elements occurring in various bacterial species, including *H. pylori* (4, 11). PCR amplification of genomic DNA located between these repetitive sequences within the *H. pylori* genome (REP-PCR) has been shown to be useful to generate stable and reproducible DNA fingerprints despite the large degree of genetic heterogeneity among *H. pylori* strains (4). *cagA* indicates the presence of a so-called pathogenicity island which harbors other potential virulence determinants (3).

From nine patients with intestinal-type gastric adenocarcinoma (four men and five women; age range, 24 to 90 years; mean age, 59 years) evaluated at the University Hospital San Juan de Dios, Bogota, Colombia, gastric biopsy specimens from cardia, corpus, and antrum were obtained. *H. pylori* isolates from all gastric biopsy specimens were recovered under standard conditions and identified by Gram-stain morphology and biochemical testing. Six single colonies from each *H. pylori* isolate were obtained, giving a total of 18 single colonies per patient. Genomic DNA extraction and generation of REP-PCR DNA fingerprints were performed as described previously (4). *cagA* was detected by PCR amplification of a 297-bp region (nucleotides 1751 to 2048) and a ~1.4-kb DNA fragment further downstream in the *cagA* gene as described previously (6).

REP-PCR DNA fingerprints were generated for a total of 162 single colonies of *H. pylori* obtained from three different gastric sites and were compared with that of the parental isolate. Each patient harbored an *H. pylori* strain with a unique DNA fingerprint. DNA fingerprints from the *H. pylori* parent isolate and the corresponding 18 single colonies obtained from six of nine patients demonstrated identical DNA band profiles (Fig. 1). In one patient, the *H. pylori* DNA fingerprints of 17 of the 18 single colonies matched the parental isolate, and the remaining single-colony fingerprint was highly similar (Fig. 2). In two patients, two single-colony band patterns were highly

similar but not identical to the parental isolate DNA fingerprint, with one single colony being very different from the parental isolate DNA fingerprint. Both the 297-bp and the ~1.4-kb PCR products for the *cagA* gene were detected in all *H. pylori* isolates and the respective single colonies, indicating the ubiquitous presence of the *cagA* gene in this population (data not shown).

Our data suggest that gastric cancer patients from a country with a high prevalence of *H. pylori* infection appear to be infected with a genetically predominant strain throughout the stomach. Jorgensen et al. utilized randomly amplified polymorphic DNA (RAPD)-PCR and found that the majority of 106 patients were infected with a predominant strain, but multiple patients harbored more than one strain (5). However, this study was limited by the fact that no single colonies were investigated. Similarly, Taylor et al. detected identical DNA patterns produced by restriction enzyme analysis, RAPD-PCR, and PCR-restriction fragment length polymorphism, suggesting infection with a single strain in 56% of patients. However, this analysis was also not extended to single colonies (9).

With respect to *H. pylori* isolates obtained from different gastroduodenal sites, our data are in agreement with a study by Prewett et al. (8), who identified a single *H. pylori* strain in biopsy specimens from the antrum, corpus, and duodenum of 13 of 15 patients. Similarly, a study by Cellini et al. included antrum and corpus biopsy specimens from 32 *H. pylori*-infected patients and identified a single predominant strain infection in 27 patients (2).

The present study is unique in that *H. pylori* from the cardia region in addition to that from the gastric antrum and corpus was cultured, and in that six single colonies were subcultured from the parental isolate of each gastric site. Our finding of a homogeneous *H. pylori* population throughout the stomach may be explained by the following possibilities. (i) An individual patient may be exposed and colonized by one unique strain. (ii) A patient may have been infected with multiple strains, with one strain becoming dominant over time. Or (iii) the presence of a particular strain may inhibit or prevent colonization by different strains upon sequential exposure. In our study, all single colonies of *H. pylori* and the respective parental isolates possessed the *cagA* gene, which is considered a marker for the presence of the so-called pathogenicity island. The presence of two different regions of the *cagA* gene further

\* Corresponding author. Mailing address: Veterans Affairs Medical Center (111 D), 2002 Holcombe Blvd., Houston, TX 77030. Phone: (713) 794-7231. Fax: (713) 790-1040.

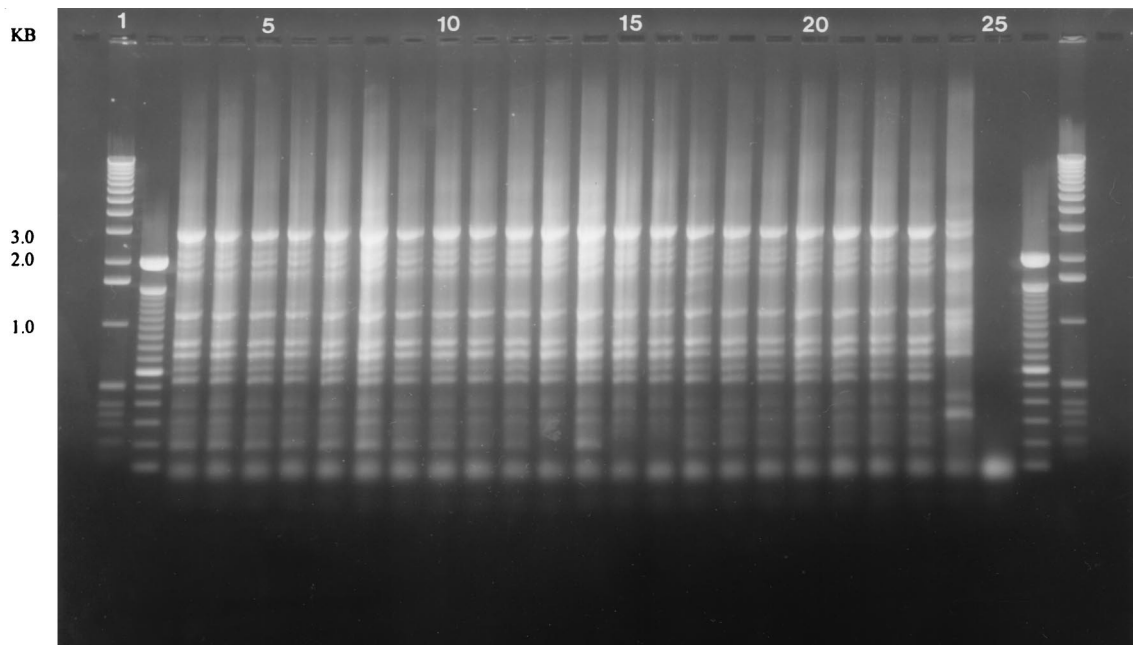


FIG. 1. DNA fingerprints of parental isolate and single colonies from a single patient showing identical fingerprints from parental and single-colony isolates. Lanes: 1 and 27, 1-kb molecular mass standards; 2 and 26, 100-bp ladder; 3, antral parental isolate; 4 to 9, single colonies from antrum; 10, corpus parental isolate; 11 to 16, single colonies from corpus; 17, cardia parental isolate; 18 to 23, single colonies from cardia; 24, ATCC 49503 reference strain fingerprint; 25, negative control.

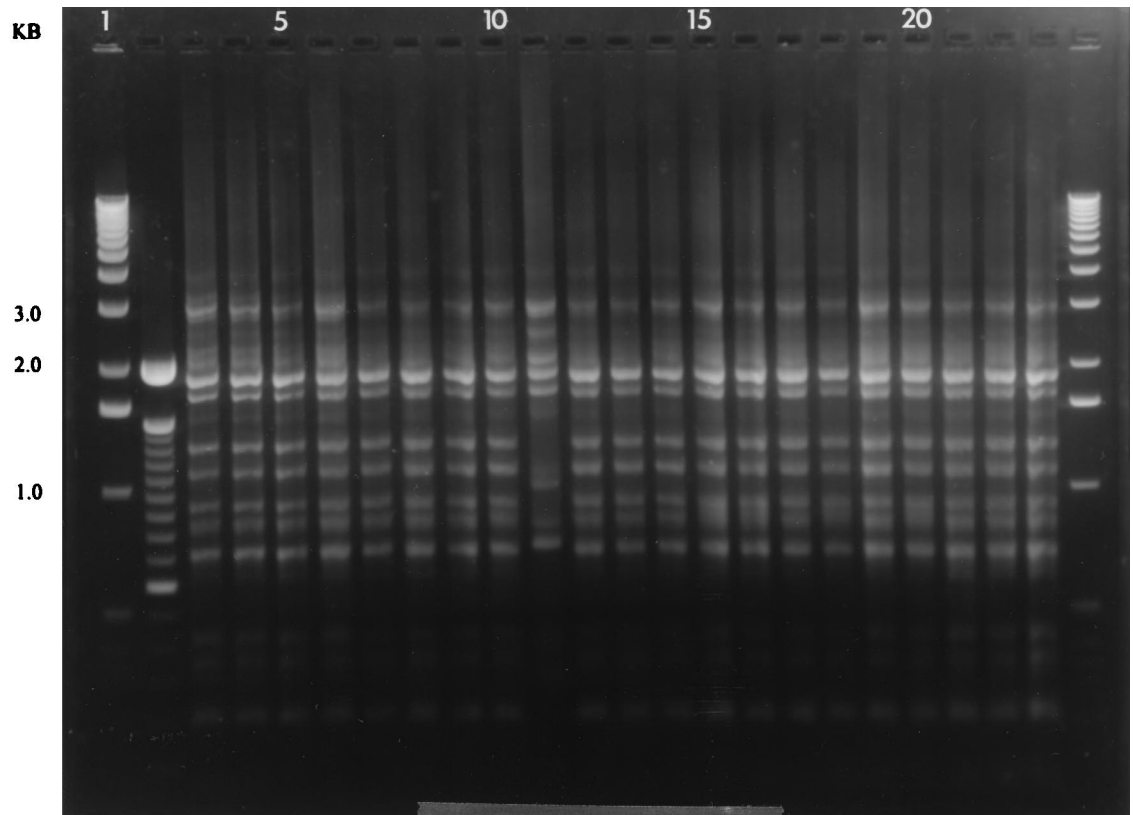


FIG. 2. DNA fingerprints of parental isolate and single colonies from a single patient showing identical single-colony fingerprints except one single colony from the corpus. Lanes: 1 and 24, 1-kb molecular mass standards; 2, 100-bp ladder; 4, parental isolate from antrum; 5 to 9, single colonies from antrum; 10, corpus parental isolate; 11 to 16, single colonies from corpus; 17, cardia parental isolate; 18 to 23, single colonies from cardia.

supports the homogeneity in these isolates. This is in contrast to the observation by van der Ende et al. that three of eight family members from whom multiple single colonies were obtained contained both *cagA*-positive and *cagA*-negative *H. pylori* strains (10).

From our data, we conclude that REP-PCR can be used to generate reproducible and stable DNA fingerprints of all *H. pylori* strains we examined. Individual strains (single colonies) of the *H. pylori* population from individual patients almost always yield DNA fingerprints identical or highly similar to that of the parent isolate. *H. pylori*-positive individuals are infected with a single major genotype. If a single colony is selected from an individual patient for molecular analysis, it is possible but unlikely to select a single colony not representative of the *H. pylori* population infecting that individual host.

We thank Susan M. Small for her meticulous technical assistance in the culture and genetic characterization of these *H. pylori* isolates.

The research was supported by the NIH National Cancer Institute grant R01CA67469.

#### REFERENCES

1. Akyopyants, N., N. O. Bukanov, T. U. Westblom, S. Kresovich, and D. E. Berg. 1992. DNA diversity among clinical isolates of *Helicobacter pylori* detected by PCR-based RAPD fingerprinting. *Nucleic Acids Res.* **20**:5137–5142.
2. Cellini, L., N. Allocati, E. Di Campeli, M. Masuli, S. Di Bartolomeo, and B. Danielli. 1996. *Helicobacter pylori* isolated from stomach corpus and antrum: comparison of DNA patterns. *J. Infect.* **32**:219–221.
3. Censini, S., C. Lange, Z. Xiang, J. E. Crabtree, P. Ghiara, M. Borodovsky, R. Rappuoli, and A. Covacci. 1996. *cag*, a pathogenicity island of *Helicobacter pylori*, encodes type I-specific and disease-associated virulence factors. *Proc. Natl. Acad. Sci. USA* **93**:14648–14653.
4. Go, M. F., K. Y. Chan, J. Versalovic, T. Koeuth, D. Y. Graham, and J. R. Lupski. 1995. Cluster analysis of *Helicobacter pylori* genomic DNA fingerprints suggests gastroduodenal disease-specific associations. *Scand. J. Gastroenterol.* **30**:640–646.
5. Jorgensen, M., G. Daskalopoulos, V. Waburton, H. M. Mitchel, and S. L. Hazell. 1996. Multiple strain colonization and metronidazole resistance in *Helicobacter pylori*-infected patients: identification from sequential and multiple biopsy specimens. *J. Infect. Dis.* **174**:631–635.
6. Miehke, S., K. Kibler, J. G. Kim, N. Figura, S. M. Small, D. Y. Graham, and M. F. Go. 1996. Allelic variation in *Helicobacter pylori cagA* gene from Korea compared to the United States. *Am. J. Gastroenterol.* **91**:1322–1325.
7. Owen, R. J., J. Bickley, M. Costas, and D. R. Morgan. 1991. Genomic variation in *Helicobacter pylori*: application for identification of strains. *Scand. J. Gastroenterol.* **181**:43–50.
8. Prewett, E. J., J. Bickley, R. J. Owen, and R. E. Pounder. 1992. DNA patterns of *Helicobacter pylori* isolated from the antrum, body and duodenum. *Gastroenterology* **102**:829–833.
9. Taylor, N. S., J. G. Fox, N. S. Akopyants, D. E. Berg, N. Thompson, B. Shames, L. Yan, E. Fontham, F. Janney, F. M. Hunter, and P. Correa. 1995. Long-term colonization with single and multiple strains of *Helicobacter pylori* assessed by DNA fingerprinting. *J. Clin. Microbiol.* **33**:918–923.
10. van der Ende, A., E. A. J. Rauws, M. Feller, C. J. J. Mulder, G. N. J. Tytgat, and J. Dankert. 1996. Heterogeneous *Helicobacter pylori* isolates from members of a family with a history of peptic ulcer disease. *Gastroenterology* **111**:638–647.
11. Versalovic, J., T. Koeuth, and J. R. Lupski. 1991. Distribution of repetitive DNA sequences in eubacteria and application to fingerprinting of bacterial genomes. *Nucleic Acids Res.* **19**:6823–6831.