

## Comparative Analysis of PCR versus Culture for Diagnosis of Ulceroglandular Tularemia

ANDERS JOHANSSON,<sup>1</sup> LENNART BERGLUND,<sup>2</sup> ULLA ERIKSSON,<sup>3</sup> INGELA GÖRANSSON,<sup>3</sup>  
RALFH WOLLIN,<sup>4</sup> MATS FORSMAN,<sup>3</sup> ARNE TÄRNVIK,<sup>1</sup> AND ANDERS SJÖSTEDT<sup>3,5\*</sup>

Department of Clinical Microbiology, Division of Infectious Diseases,<sup>1</sup> and Department of Clinical Microbiology, Division of Bacteriology,<sup>5</sup> Umeå University, S-901 85 Umeå, Primary Health Care Center, S-827 25 Ljusdal,<sup>2</sup> Department of Microbiology, Defence Research Establishment, S-901 82 Umeå,<sup>3</sup> and Department of Bacteriology, Swedish Institute of Infectious Disease Control, S-105 21 Stockholm,<sup>4</sup> Sweden

Received 4 May 1999/Accepted 30 September 1999

PCR and culture were comparatively evaluated for their abilities to demonstrate *Francisella tularensis* in wound specimens from tularemia patients during an outbreak in Sweden in 1998. For transport of the specimens used for PCR, a buffer solution containing a nuclease inhibitor was used, and for transport of the specimens used for culture, a commercial transport system was selected after experimental comparison of various systems. Of 40 patients with culture- and/or serology-verified ulceroglandular tularemia, PCR detected *F. tularensis* DNA in 30 (75%) patients, whereas culture detected bacterial growth in 25 (62%) patients. Compared to data from a previous study, the present inclusion of a nuclease inhibitor in the transport medium did not improve the sensitivity of the PCR, whereas the sensitivity of the culture procedure was significantly increased by selection of the system used for transport. Among eight patients with clinically suspected tularemia but with negative serology and culture, specimens from four patients showed detectable DNA. In three of these patients the diagnosis was verified by the demonstration of an *F. tularensis*-specific T-cell response in vitro. In conclusion, PCR was more sensitive than culture for demonstration of *F. tularensis* in wound specimens. Besides, we showed that tularemia may proceed without development of serum antibodies, and in these patients, PCR may be of special importance for verification of the diagnosis.

*Francisella tularensis* is endemic throughout the Northern Hemisphere and causes outbreaks of tularemia in various mammals including rodents, lagomorphs, and humans. In humans, the clinical presentation depends on the route of entrance of the bacteria. The ulceroglandular form of the disease is acquired either by direct contact with an infected animal or by vector transmission. Patients typically present with fever, enlarged and tender lymph nodes, and an ulcer at the place of entry (4, 5). The skin lesion is usually slight, and the appearance of an infected insect bite need not actually differ from that of a noninfected bite.

*F. tularensis* is highly virulent, and in diagnostic work involving culture procedures, nonvaccinated staff are at high risk of acquiring clinical disease (3). In most clinical laboratories, serology is the only diagnostic test used. Exceptions are patients with septicemia in whom tularemia may be diagnosed more or less accidentally by growth of *F. tularensis* in blood cultures. Consequently, some work is performed to optimize the blood culture procedure for *F. tularensis* (11, 12). There is, however, little experience with the use of culture of wound specimens in clinical diagnostic work. The optimal way of sampling and the optimal handling of wound specimens during transport are unknown, and therefore, the potential efficacy of the procedure is also unknown.

Rapid methods for the identification of *F. tularensis* such as the immunofluorescence assay and the enzyme-linked immunosorbent assay for the detection of antigen and the RNA hybridization assay have been tried but have so far not been included in routine diagnostics (9; M. Forsman, K. Kuoppa, A.

Sjöstedt, and A. Tärnvik, Letter, Eur. J. Clin. Microbiol. Infect. Dis. 9:784–785, 1990; A. Tärnvik, S. Löfgren, L. Öhlund, and G. Sandström, Letter, Eur. J. Clin. Microbiol. 6:318–319, 1987). We recently introduced PCR for the demonstration of *F. tularensis* in wound specimens (16). The method showed a high degree of specificity, and by use of spiked samples, a sensitivity of 10<sup>2</sup> bacteria was demonstrated. In an outbreak of ulceroglandular tularemia in Sweden in 1995, *F. tularensis* DNA was successfully amplified from wound specimens from 29 of 40 patients. In that study, specimens were sent in saline. When various methods for treatment of the specimens prior to the PCR analysis were compared, the best success was achieved by use of a protocol that included the nuclease inhibitor guanidine thiocyanate as the lysis agent.

The use of PCR for the direct diagnosis of ulceroglandular tularemia is thus highly promising, and more work on the conditions that might influence the assay seems to be warranted. By inclusion of a nuclease inhibitor in the transport medium, we addressed in the present study the question of whether degradation during transport might adversely affect the outcome of PCR. As regards culture, we compared various transport systems by experimental inoculation and storage. When in 1998 a new outbreak of ulceroglandular tularemia occurred in the same geographic region as the 1995 outbreak (16), we compared the sensitivity of PCR with that of culture.

### MATERIALS AND METHODS

**Bacteria.** *F. tularensis* live vaccine strain (LVS) (ATCC 29684) was supplied by the U.S. Army Medical Research Institute of Infectious Diseases, Fort Detrick, Frederick, Md. A virulent strain of *F. tularensis* (strain FSC200) was isolated from a patient during the 1998 outbreak of ulceroglandular tularemia in central Sweden. *F. tularensis* strains were handled under biosafety level 3 laboratory conditions. *Pseudomonas* sp. strain CF600 was kindly provided by Victoria Shingler, Umeå University, Umeå, Sweden.

\* Corresponding author. Mailing address: Division of Bacteriology, Department of Clinical Microbiology, Umeå University, S-901 85 Umeå, Sweden. Phone: 46 90 7851120. Fax: 46 90 7852225. E-mail: anders.sjostedt@infdis.umu.se.

TABLE 1. Survival of *F. tularensis* in transport media

Strain	Transport medium	Survival (no. of bacteria) at the following times postinoculation <sup>a</sup> :				
		1 h	4 h	48 h	96 h	168 h
FSC200 <sup>b</sup>	Saline	$9.4 \times 10^4$	$4.9 \times 10^2$	0	0	0
	Modified Stuart	$4.1 \times 10^5$	$9.2 \times 10^4$	0	0	0
	Copan	$6.2 \times 10^5$	$4.5 \times 10^5$	$4.4 \times 10^5$	$3.9 \times 10^5$	$1.8 \times 10^5$
ATCC 29684 <sup>c</sup>	Saline	$8.6 \times 10^2$	$9 \times 10^0$	0	0	0
	Modified Stuart	$4.5 \times 10^4$	$1.7 \times 10^3$	0	0	0
	Copan	$3.8 \times 10^5$	$2.2 \times 10^5$	$3.3 \times 10^5$	$4.1 \times 10^5$	$2.7 \times 10^5$

<sup>a</sup> The bacteria were inoculated in transport medium and were stored at room temperature for the indicated period of time. Each value represents the mean number of bacteria in duplicate samples.

<sup>b</sup> The inoculum was  $\sim 5.5 \times 10^6$ . The strain was isolated from a wound sample of a patient during the 1998 outbreak along the Ljusnan River in Sweden.

<sup>c</sup> The inoculum was  $\sim 1.5 \times 10^6$ . The strain was the live vaccine strain *F. tularensis* LVS.

**Bacterial transport systems.** Four different transport systems were compared. First, a modified variant of the nonnutrient Stuart medium intended for transport of gonococci (13) has been used for several decades for transport of bacterial specimens and was used during the 1995 outbreak of ulceroglandular tularemia (16). Second, a modified Thayer-Martin medium (14) routinely used in the laboratory for culture of *F. tularensis* was evaluated. It was supplemented with 7.5 mg of colistin (Sigma, St. Louis, Mo.) per liter, 2.5 mg of amphotericin B (Bristol-Myers Squibb, New Brunswick, N.J.) per liter, 0.5 mg of lincomycin (Upjohn, Kalamazoo, Mich.) per liter, 4 mg of trimethoprim (Duchefa, Haarlem, The Netherlands) per liter, and 10 mg of ampicillin (Duchefa) per liter as described previously (2). Sterile saline (3-ml volumes) was also evaluated as a transport medium. Sterile cotton-tipped wood applicators (Selefatrade AB, Spånga, Sweden) were used for inoculation of *F. tularensis* in all these media. Finally, we assessed a commercial transport system designed for transport of common anaerobic and aerobic pathogens (7, 10); J. L. Perry, D. R. Ballou, and J. L. Salyer, Letter, J. Clin. Microbiol. 35:3367–3368, 1997). The system included a rayon-tipped plastic applicator and a tube containing Amies agar with charcoal (Copan Italia, Brescia, Italy).

**Patient samples.** In August and September 1998, tularemia occurred along the Ljusnan River in central Sweden. Through general practitioners, wound and blood samples were obtained from patients with suspected ulceroglandular tularemia. Forty-eight patients (ages 1 to 83 years; mean age, 38.8 years; 22 females and 26 males) were included, but only 1 patient had received antibiotic treatment before the day of the visit. Material was collected from the ulcer by use of two applicators. A cotton-tipped applicator, intended for use in PCR analysis, was transported in a sterile tube containing 1.0 ml of a guanidine isothiocyanate-containing buffer (8), a solution previously shown under experimental conditions to preserve *F. tularensis* DNA for at least 1 month without a loss of amplifiable material (16). A rayon-tipped applicator was sent in Amies agar with charcoal for use in the culture diagnostic method. The samples arrived at the laboratory after 1 to 3 days of transport. Blood samples were drawn from each patient while the patient was in the acute phase of infection and 3 to 6 weeks after the onset of disease for assay of *F. tularensis*-specific antibodies. Before a patient was considered seronegative, at least four serum samples were analyzed over a period of  $\geq 2$  months.

**Culture diagnosis of tularemia.** After inoculation on a modified Thayer-Martin agar plate (14) at 37°C in 5% CO<sub>2</sub> for 6 days, growth of *F. tularensis* was confirmed by slide agglutination with a commercial antiserum (Difco Laboratories, Augsburg, Germany) and DNA amplification by PCR.

**Enzyme immunoassay.** For enzyme immunoassay, microplates were coated with an *F. tularensis* carbohydrate-protein complex (14), and serum samples, diluted 1/500, were assayed as described previously (18). Samples from a large number of subjects who denied that they had previously had tularemia or tularemia vaccination showed mean  $\pm$  standard deviation enzyme-linked immunosorbent assay values of  $0.320 \pm 0.084$  for immunoglobulin G (IgG) antibodies and  $0.099 \pm 0.011$  for IgM antibodies, and on that basis, an IgG value of  $\geq 0.76$  and an IgM value of  $\geq 0.40$  were considered to confirm the diagnosis.

**Preparation of DNA and PCR analysis.** A 450- $\mu$ l volume was collected from each patient sample that had been suspended in a guanidine isothiocyanate-containing buffer (8), and the volume was further diluted with the buffer to a final volume of 900  $\mu$ l. DNA was prepared as described previously (8, 16) and was dissolved in 12  $\mu$ l of H<sub>2</sub>O for amplification in a multiplex PCR with primer pairs specific to the gene encoding a 17-kDa lipoprotein of *F. tularensis* LVS and to the human  $\beta$ -actin gene. The 17-kDa gene primers TUL4-435 and TUL4-863 (16) yield an *F. tularensis*-specific, 0.4-kb fragment (17), whereas the human  $\beta$ -actin gene primers yield a 0.2-kb fragment. In each PCR analysis, heat-killed *F. tularensis* and H<sub>2</sub>O were included as controls. The reaction mixture contained (at a final concentration) a mixture of deoxynucleoside triphosphates (Pharmacia Biotech, Uppsala, Sweden) at a concentration of 200  $\mu$ M, each primer (Pharmacia Biotech) at a concentration of 0.8  $\mu$ M, 3 mM MgCl<sub>2</sub>, and 1 U of thermostable *Taq* polymerase in 25  $\mu$ l of *Taq* reaction buffer (Advanced Biotechnolo-

gies, London, United Kingdom). To each reaction mixture, 3  $\mu$ l of sample was added for denaturation at 94°C for 3 min in a DNA Progene thermal cycler (Techne, Cambridge, United Kingdom), followed by amplification for 30 cycles. Each cycle consisted of denaturation at 94°C for 30 s, primer annealing at 65°C for 30 s, and primer extension at 72°C for 1 min. After a final extension at 72°C for 5 min, the tubes were stored at 4°C until a 5- $\mu$ l portion of each reaction mixture was subjected to electrophoresis in a 2% agarose gel. After ethidium bromide staining, the amplified gene products were visualized with UV light.

**Competitive PCR.** A 1,141-bp fragment of the *Francisella* 16S rRNA gene (rDNA) was amplified from patient samples by use of a genus-specific primer pair, primers F5 and F11 (6). For use as an internal standard, a 673-bp DNA fragment was generated from the 2,3-dioxygenase-encoding gene (*dmpB* gene) of *Pseudomonas* sp. strain CF600 (1) with the composite primers F11dmpF and F5dmpR. The primer F11dmpF (5'-TACCAGTTGGAAACGACTGTATCGACGAGGACTGCCTGAA) consisted of primer F11 (boldface letters) appended to the 5' end of bases 259 to 278 of the *dmpB* gene, and F5dmpF (CCTTTTGA GTTTCGCTCCCCAGCCAGGTCACGGCTT) consisted of primer F5 (boldface letters) appended to the 5' end of bases 892 to 874 of the *dmpB* gene. These primers thus generated a fragment flanked by the binding sequences for primers F5 and F11. To ascertain that *Francisella* 16S rDNA and the internal standard construct were amplified with similar efficiencies, an equal molar amount of the respective target was amplified separately. Aliquots were removed after cycles 10, 15, 20, 25, and 30, and the quantity of each amplicon was plotted in relation to the number of cycles. In three experiments, no significant differences in the slope coefficients for the linear portions of two curves were found. The amount of 16S rDNA on ethidium bromide-stained agarose gels was estimated by identifying the dilution of the competitor fragment that after amplification showed the same intensity as the amplicon of the sample DNA after correction for the different lengths of the two fragments.

**Assay of proliferative T-cell response.** Peripheral blood mononuclear cells were prepared from heparinized blood by centrifugation on a Ficoll-Metrizoate gradient (Lymphoprep; NYCOMED AS, Oslo, Norway), and cultures were established. Each culture (200  $\mu$ l) contained  $3 \times 10^5$  mononuclear cells. The culture medium consisted of RPMI-HEPES (GIBCO Laboratories, Grand Island, N.Y.) supplemented with 15% pooled human serum, 100  $\mu$ g of gentamicin per ml, and 2 mM L-glutamine. Concanavalin A (10  $\mu$ g/ml) or heat-killed *F. tularensis* ( $10^5$  cells/ml) was used as a stimulating agent. In preliminary experiments, these concentrations were found to be optimal. To estimate the proliferative response, five replicate cultures were incubated at 37°C for 4 days, pulsed for 6 h with 1  $\mu$ Ci of [<sup>3</sup>H]thymidine, and harvested. The proliferative indices were calculated by dividing the mean for cultures with and without stimulating agent. Concanavalin A-stimulated cell cultures all showed proliferative indices of  $> 3$ .

**Recovery of *F. tularensis* in various transport systems.** To compare the various transport media, a virulent strain (strain FSC200) of *F. tularensis*, which was isolated from a Swedish patient in 1998 and passaged only once, and live vaccine strain *F. tularensis* LVS (ATCC 29684) were used. Bacteria were grown on modified Thayer-Martin medium and were suspended in saline at a density of  $10^7$  cells/ml. Portions of 0.1 ml were collected from the suspension by inserting a tipped applicator for 5 s. The applicator was stored in a transport medium at room temperature for a given period of time, removed, and rotated vigorously for 60 s in 200  $\mu$ l of saline for determination of viable counts. For PCR analysis, a 50- $\mu$ l portion was transferred to a tube containing 1.0 ml of the guanidine isothiocyanate-containing buffer. The DNA of the lysed bacteria was prepared as described previously (8) and was subjected to PCR with TUL4-435 and TUL4-863 as primers. Applicators inoculated in saline were used as negative controls. After amplification, a 5- $\mu$ l portion of each reaction mixture was subjected to electrophoresis in a 2% agarose gel. The amplified gene products were visualized with UV light after ethidium bromide staining.

TABLE 2. Sensitivities of various methods for diagnosis of tularemia during an outbreak in Sweden in 1998

Clinical condition	No. of samples positive/total no. of samples investigated (%)			
	PCR amplification of gene for:		Culture	Serology
	$\beta$ -Actin	17-kDa lipoprotein		
Tularemia confirmed by culture or sero-conversion	36/40 (90)	30/40 (75)	25/40 (62)	30/31 (97)
Tularemia suspected but serology and culture negative <sup>a</sup>	8/8 (100)	4/8 (50)	0/8 (0)	0/8 (0)

<sup>a</sup> All patients lacked serum antibodies to *F. tularensis* when the serum was tested while the patient was in the acute phase of infection and 3 to 5 weeks after the onset of disease.

## RESULTS

**Survival of *F. tularensis* in various transport media.** The survival of *F. tularensis* after storage in modified Stuart medium, saline, or Amies agar with charcoal was tested for two different strains of *F. tularensis*, a recent patient isolate, strain FSC200, and the live vaccine strain, strain LVS. Irrespective of the strain used, storage in saline or Stuart medium resulted in a significant reduction in bacterial numbers within 4 h, and 2 days after inoculation of  $1.5 \times 10^6$  or  $5.5 \times 10^6$  organisms, no viable bacteria were demonstrated (Table 1). In contrast, Amies agar with charcoal (Copan) preserved bacterial viability for 1 week, and after 7 days bacterial numbers had decreased  $\leq 1 \log_{10}$ . Irrespective of the medium, PCR analysis performed after 7 days of storage showed the presence of *F. tularensis* DNA. Control samples containing saline showed no visible amplicons. Thayer-Martin medium modified by the addition of antibiotics was repeatedly found to preserve bacterial viability as effectively as Amies agar with charcoal (data not shown).

**Culture and PCR analysis of wound specimens.** Wound specimens from 48 patients with clinically suspected tularemia were sent in Amies agar with charcoal for culture and in guanidine isothiocyanate-containing buffer for PCR. For 40 patients the diagnosis was confirmed by serology and/or culture. *F. tularensis* was isolated from 25 (62%) of these 40 patients, and *F. tularensis* DNA was successfully amplified from 30 (75%) of these 40 patients (Table 2).  $\beta$ -Actin DNA was amplifiable from all 30 *F. tularensis* DNA-containing specimens. For 4 of 10 *F. tularensis* DNA-negative specimens, however,  $\beta$ -actin DNA was not detected, indicating that these specimens may not have contained significant amounts of biological ma-

TABLE 3. Summary of laboratory results from the 1998 tularemia outbreak

Serology result	PCR result	Culture result	No. of patients
+	-	-	9
+	+	-	6
+	+	+	14
+	-	+	1
-	+	+	1
ND <sup>a</sup>	+	+	9
-	+	-	4
-	-	-	4

<sup>a</sup> ND, not determined.

terial. Thus, *F. tularensis* DNA was detected in 30 (83%) of 36 patients from whose samples  $\beta$ -actin DNA was amplified.

**T-cell response to *F. tularensis* of patients with detectable *F. tularensis* DNA but negative serology and culture.** In eight patients with clinically suspected tularemia, neither serology of samples obtained over  $\geq 12$  weeks nor wound culture confirmed the diagnosis (Table 3). *F. tularensis* DNA was successfully amplified from wound samples from four of these patients. To more fully investigate the latter patients with regard to laboratory-based evidence of tularemia, the in vitro T-cell stimulation test was performed. In three of the patients, a recall T-cell response to *F. tularensis* was demonstrated  $\sim 5$  months after onset of disease (Table 4). Stimulatory indices were  $>3.0$  times higher than the background value, whereas it was  $<2.3$  times higher for seven reference subjects who lacked a history of tularemia or tularemia vaccination. The fourth patient showed a stimulatory index of 1.0. The latter patient showed no typical signs of tularemia, and specific antibiotic treatment was not instituted.

**Quantitation of *F. tularensis* DNA in wound samples.** A competitive PCR was used to assess the amount of DNA present in six specimens (three PCR- and culture-positive specimens and three PCR-positive and culture-negative specimens) obtained during the 1995 tularemia outbreak. For all investigated samples, the estimated amount of DNA varied from  $10^6$  to  $10^7$  genomic equivalents per specimen. Results of a representative analysis are shown in Fig. 1.

## DISCUSSION

Although the nutritional requirements of *F. tularensis* have been known for decades, there has been little experience with the use of culture for the routine diagnosis of tularemia. Due to the high degree of virulence of the organism, culture of wound specimens is normally avoided (5). A more general use of culture for the diagnosis of tularemia has been reported only from Scandinavia, where the less virulent subspecies *F. tularensis* subsp. *holartica* is endemic (4, 16). In one of the latter studies (16), the sensitivity of the culture procedure was found to be as low as 25%. In that study a modified Stuart medium was used for transport, but it was found to be suboptimal in the present study. According to the present experiments with spiked samples, a commercial transport medium and a medium recommended for culture were more preservative. When the

TABLE 4. T-cell response to *F. tularensis* of patients showing detectable *F. tularensis* DNA in wound specimens but no evidence of tularemia by culture or serology

Age (yr)	Sex	Serum antibodies to <i>F. tularensis</i> <sup>a</sup>	<i>F. tularensis</i> DNA <sup>b</sup>	Time of institution of antibiotics (days after onset)	T-cell response to <i>F. tularensis</i> <sup>c</sup>
45	Male	-	+	2	8.8
67	Female	-	+	2	9.8
42	Female	-	+	1	3.1
59	Female	-	+	Not instituted	1.0

<sup>a</sup> Not detected in any of at least four serum samples collected over a period of  $\geq 3$  months.

<sup>b</sup> Detectable DNA in wound specimen.

<sup>c</sup> After 4 days of incubation with heat-killed *F. tularensis*, T cells were pulsed with [<sup>3</sup>H]thymidine. An index representing the ratio of the mean incorporation of five cultures with and without antigen is shown. Reference subjects without any previous history of exposure to *F. tularensis* ( $n = 7$ ) all showed indices of  $<2.3$ .

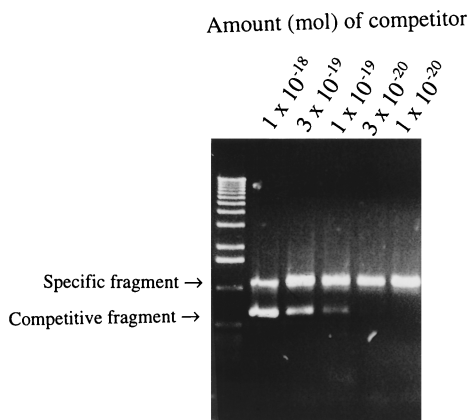


FIG. 1. Competitive PCR analysis for quantitative estimation of *F. tularensis* 16S rDNA in wound specimens from tularemia patients. Results of a representative analysis are shown. The amount of 16S rDNA was estimated by identifying the dilution of competitor fragment showing the same intensity as the amplicon of the sample DNA after amplification.

commercial medium was used as the transport medium for specimens from the present outbreak, a sensitivity of 62% was recorded. The transport medium thus seemed to be important for the success of culture of *F. tularensis* from wound specimens.

Due to hazards associated with culture, ulceroglandular tularemia seems to be a perfect target for gene-based pathogen identification. PCR for identification of the gene encoding a 17-kDa outer membrane lipoprotein allows the sensitive identification of *F. tularensis*. The gene is conserved among various strains of *F. tularensis* and shows no significant similarity to other prokaryotic or eukaryotic gene sequences in current gene banks. *F. tularensis* is not closely related to organisms known to be associated with human infection or colonization (6), thus further minimizing problems with interpretation of the findings.

According to the present results and those of a previous study (16), the sensitivity of PCR applied to wound specimens from patients with ulceroglandular tularemia is ~75%. In principle, a failure to detect DNA may be due either to inefficient sampling or to degradation of DNA during transport. The present and previous results favor the first explanation. If degradation was the main problem, the present inclusion of a nuclease inhibitor in the transport medium would have been expected to result in an increased sensitivity. The sensitivity was, however, not higher than that found when samples were sent in saline (16). Moreover, some samples would have been expected to contain relatively small amounts of amplifiable DNA. When six samples were subjected to quantitative PCR, all were found to have large amounts of DNA ( $10^6$  to  $10^7$  genomic equivalents). In line with this, we previously showed that the success of PCR amplification was not decisively affected by the time of transport (16).

If the transport is not the weak link of the present PCR application, difficulties associated with sampling may be the more important. Some of those specimens that lacked amplifiable *F. tularensis* DNA also lacked amounts of  $\beta$ -actin DNA sufficient for PCR detection, indicating that in those samples, no or very little biological material was present. By contrast,  $\beta$ -actin DNA was amplified from all 30 samples in which *F. tularensis*-specific DNA was detectable. Moreover, only 1 of the 10 PCR-negative samples was culture positive. It should be recalled that in some patients with tularemia, the ulcer is very

slight, and it may even be difficult to distinguish between an infected and a noninfected mosquito bite (4). Thus, the sensitivity of the PCR may well be restricted by difficulty with obtaining representative material. To improve sensitivity, intense rubbing of the wound surface may be tried, and sampling from more than one lesion may also be attempted. When lesions are minute or dry, a skin biopsy might be useful.

In the present study we identified four patients with clinically suspected tularemia but with repeated negative serology results when their sera were tested up to 12 weeks after the onset of symptoms and with negative culture results. When subjected to the T-cell stimulation test, three of them showed a strong cell-mediated immune response to *F. tularensis*. In previous vaccination trials, such a lack of correlation between serological and cell-mediated responses to the organism has been demonstrated, and similar to the patients in the present study, some of the vaccinees showed a strong T-cell response but no antibodies (18, 19). In clinical studies of tularemia, there are virtually no reports of the absence of antibodies in patients who were monitored by serologic testing for several weeks. A problem, however, is that the presence of serum antibodies is often used as an inclusion criterion for a study, and seronegative patients with tularemia may thereby be excluded a priori. In the present study those three patients who failed to respond with detectable antibodies all received treatment within 2 days of the onset of disease. An inhibitory effect of the early institution of antibiotics on the serological response in tularemia has been suggested previously (15). In essence, PCR may verify some cases of tularemia that would otherwise escape detection.

Thus, under transport conditions believed to preserve the viability of *F. tularensis*, in the present study PCR showed a sensitivity of ~75% and culture showed a sensitivity of 62%. Moreover, PCR allowed detection of some cases of tularemia that failed to be detected by culture or serology. The sensitivity of PCR may possibly be restricted by difficulty with obtaining representative material from all patients.

#### ACKNOWLEDGMENTS

We thank Stig Granström for expert advice on transport systems for culture specimens and Michal Kroca and Thorsten Johansson for help with lymphocyte stimulation assays.

Financial support was obtained from the Swedish Medical Research Council (grant 9485), Västerbottens Landsting, and the Medical Faculty, Umeå University, Umeå, Sweden.

#### REFERENCES

- Bartilson, M., and V. Shingler. 1989. Nucleotide sequence and expression of the catechol 2,3-dioxygenase-encoding gene of phenol-catabolizing *Pseudomonas* CF600. *Gene* 85:233-238.
- Berdal, B. P., and E. Söderlund. 1977. Cultivation and isolation of *Francisella tularensis* on selective chocolate agar, as used routinely for the isolation of gonococci. *Acta Pathol. Microbiol. Scand. Sect. B* 85:108-109.
- Burke, D. S. 1977. Immunization against tularemia: analysis of the effectiveness of live *Francisella tularensis* vaccine in prevention of laboratory-acquired tularemia. *J. Infect. Dis.* 135:55-60.
- Christenson, B. 1984. An outbreak of tularemia in the northern part of central Sweden. *Scand. J. Infect. Dis.* 16:285-290.
- Evans, M. E., D. W. Gregory, W. Schaffner, and Z. A. McGee. 1985. Tularemia: a 30-year experience with 88 cases. *Medicine (Baltimore)* 64:251-269.
- Forsman, M., G. Sandström, and A. Sjöstedt. 1994. Analysis of 16S ribosomal DNA sequences of *Francisella* strains and utilization for determination of the phylogeny of the genus and for identification of strains by PCR. *Int. J. Syst. Bacteriol.* 44:38-46.
- Hudspeth, M. K., D. M. Citron, and E. J. Goldstein. 1997. Evaluation of a novel specimen transport system (Venturi Transystem) for anaerobic bacteria. *Clin. Infect. Dis.* 25(Suppl. 2):S132-S133.
- Ibrahim, A., L. Norlander, A. Macellaro, and A. Sjöstedt. 1997. Specific detection of *Coxiella burnetii* through partial amplification of 23S rDNA. *Eur. J. Epidemiol.* 13:329-334.
- Karlsson, K. A., and O. Söderlind. 1973. Studies of the diagnosis of tulare-

- mia, p. 224–230. In S. Winblad (ed.), Contributions to microbiology and immunology, vol. 2. Yersinia, Pasteurella and Francisella. A symposium. S. Karger, Basel, Switzerland.
10. **Perry, J. L.** 1997. Assessment of swab transport systems for aerobic and anaerobic organism recovery. *J. Clin. Microbiol.* **35**:1269–1271.
  11. **Provenza, J. M., S. A. Klotz, and R. L. Penn.** 1986. Isolation of *Francisella tularensis* from blood. *J. Clin. Microbiol.* **24**:453–455.
  12. **Reary, B. W., and S. A. Klotz.** 1988. Enhancing recovery of *Francisella tularensis* from blood. *Diagn. Microbiol. Infect. Dis.* **11**:117–119.
  13. **Ringertz, O.** 1960. A modified Stuart medium for the transport of gonococcal specimens. *Acta Pathol. Microbiol. Scand.* **74**:371–380.
  14. **Sandström, G., A. Tärnvik, H. Wolf-Watz, and S. Löfgren.** 1984. Antigen from *Francisella tularensis*: nonidentity between determinants participating in cell-mediated and humoral reactions. *Infect. Immun.* **45**:101–106.
  15. **Saslaw, S., and S. Carhart.** 1961. Studies with tularemia vaccines in volunteers. III. Serological aspects following intracutaneous or respiratory challenge in both vaccinated and nonvaccinated volunteers. *Am. J. Med. Sci.* **241**:689–699.
  16. **Sjöstedt, A., U. Eriksson, L. Berglund, and A. Tärnvik.** 1997. Detection of *Francisella tularensis* in ulcers of patients with tularemia by PCR. *J. Clin. Microbiol.* **35**:1045–1048.
  17. **Sjöstedt, A., K. Kuoppa, T. Johansson, and G. Sandström.** 1992. The 17 kDa lipoprotein and encoding gene of *Francisella tularensis* LVS are conserved in strains of *Francisella tularensis*. *Microb. Pathog.* **13**:243–249.
  18. **Tärnvik, A., M. L. Löfgren, S. Löfgren, G. Sandström, and H. Wolf-Watz.** 1985. Long-lasting cell-mediated immunity induced by a live *Francisella tularensis* vaccine. *J. Clin. Microbiol.* **22**:527–530.
  19. **Tärnvik, A., and S. Löfgren.** 1975. Stimulation of human lymphocytes by a vaccine strain of *Francisella tularensis*. *Infect. Immun.* **12**:951–957.