

Detection of Inducible Clindamycin Resistance of Staphylococci in Conjunction with Performance of Automated Broth Susceptibility Testing

J. H. Jorgensen,* S. A. Crawford, M. L. McElmeel, and K. R. Fiebelkorn

Department of Pathology, University of Texas Health Science Center, San Antonio, Texas 78229

Received 4 November 2003/Returned for modification 18 December 2003/Accepted 7 January 2004

This study has shown that inducible clindamycin resistance in staphylococci can be detected by disk testing on sheep blood agar inoculum purity plates used with the bioMerieux VITEK 2. Tests of 150 erythromycin-resistant isolates correlated with standard D-zone tests on Mueller-Hinton agar and with PCR for *erm*(A), *erm*(C), and *msr*(A).

Many clinical microbiology laboratories perform routine antimicrobial susceptibility testing either with a rapid automated instrument method or by broth microdilution. While broth-based test methods work well for the detection of the majority of antimicrobial resistance mechanisms, there has been increasing awareness that inducible clindamycin resistance in *Staphylococcus aureus* and coagulase-negative *Staphylococcus* species may not be detected by standard tests (1, 4, 9, 10). Macrolide resistance in staphylococci may be due to ribosomal target modification that affects the activities of both macrolides and clindamycin, called macrolide-lincosamide-streptogramin B (MLS_B) resistance, which is encoded by either *erm*(A) or *erm*(C) (2, 5, 6). While strains that demonstrate constitutive resistance to clindamycin can normally be detected by standard susceptibility testing methods, inducible resistance (MLS_Bi) present in some strains is not routinely detected by standard broth- or agar-based susceptibility test methods (9, 10). It is important to distinguish the MLS_Bi strains from macrolide-resistant strains that contain the gene *msr*(A), encoding an efflux pump that affects only macrolides, not clindamycin (2, 10).

Recently, we described a practical method for detection of MLS_Bi strains that involves simply placing standard erythromycin and clindamycin disks in adjacent positions on a Mueller-Hinton agar plate when the National Committee for Clinical Laboratory Standards disk diffusion test is performed (3). While this is a simple maneuver for laboratories that perform disk diffusion as their standard method for testing staphylococcal clinical isolates, it would constitute an additional test for laboratories that routinely use a broth-based method. The purpose of this study was to devise a simple procedure for performing disk induction testing in conjunction with broth-based susceptibility test methods.

A group of 150 erythromycin-resistant clinical isolates (75 *S. aureus* and 75 coagulase-negative staphylococci) were selected from among isolates previously characterized by disk induction testing and by PCR for the *erm*(A), *erm*(C), and *msr*(A) genes

(3). These included 48 *S. epidermidis*, 15 *S. haemolyticus*, 3 *S. auricularis*, 3 *S. hominis*, 2 *S. simulans*, 2 *S. warneri*, and 2 *S. capitis* strains. Isolates were tested with the bioMerieux VITEK 2 instrument and standard AST-GP susceptibility cards in accordance with the manufacturer's protocol (bioMerieux, Durham, N.C.). A 0.5 McFarland standard suspension of each isolate was prepared and transferred to the VITEK 2 instrument for further dilution and card filling. After card inoculation, the tube containing the autodiluted (~1:10) inoculum suspension was streaked for confluent growth across the first one-third of the surface of a standard tryptic soy–5% sheep blood agar plate (Becton Dickinson, Cockeysville, Md.) and then streaked for isolated colonies on the remaining agar surface with the larger of the two VITEK 2 straws left in the inoculum tube. A 15- μ g erythromycin disk (Becton Dickinson) and 2- μ g clindamycin disk (Becton Dickinson) were placed on the plate in the area streaked for confluent growth, with a distance from disk edge to disk edge of 15 mm. After incubation for 16 to 20 h at 35°C in ambient air, the zones of inhibition were examined to detect any flattening of the shape of the clindamycin zone (D-zone), indicating inducible resistance. Examples of positive and negative induction tests with the inoculum purity plates are shown in Fig. 1.

A comparison of the purity plate induction tests, standard disk induction tests on Mueller-Hinton agar, and the VITEK 2 susceptibility results is shown in Table 1. All isolates with inducible clindamycin resistance by the standard method and possessing either *erm*(A) or *erm*(C) were readily detected in the purity plate induction test. These included 22 *S. aureus* [4 with *erm*(A) and 18 with *erm*(C)] and 26 coagulase-negative staphylococci [5 with *erm*(A), 19 with *erm*(C), one with both *erm*(A) and *msr*(A), and one with *erm*(C) and *msr*(A)]. All 48 isolates had clindamycin MICs of ≤ 0.5 μ g/ml by VITEK 2 but showed flattening of the clindamycin zone on the purity plate. All 62 isolates with constitutive clindamycin resistance (25 *S. aureus* and 37 coagulase-negative staphylococci) were detected by VITEK 2 (61 had MICs of ≥ 4 μ g/ml) and demonstrated either no zone of inhibition on the purity plates or a heavy ingrowth pattern around the clindamycin disks. Eight isolates showed a double zone of growth, with flattening of the outer zone and heavy inner growth up to the edge of the disk; all of these isolates contained *erm*(A). All eight isolates were re-

* Corresponding author. Mailing address: Department of Pathology, University of Texas Health Science Center, 7703 Floyd Curl Dr., San Antonio, TX 78229. Phone: (210) 567-4088. Fax: (210) 567-2367. E-mail: jorgensen@uthscsa.edu.

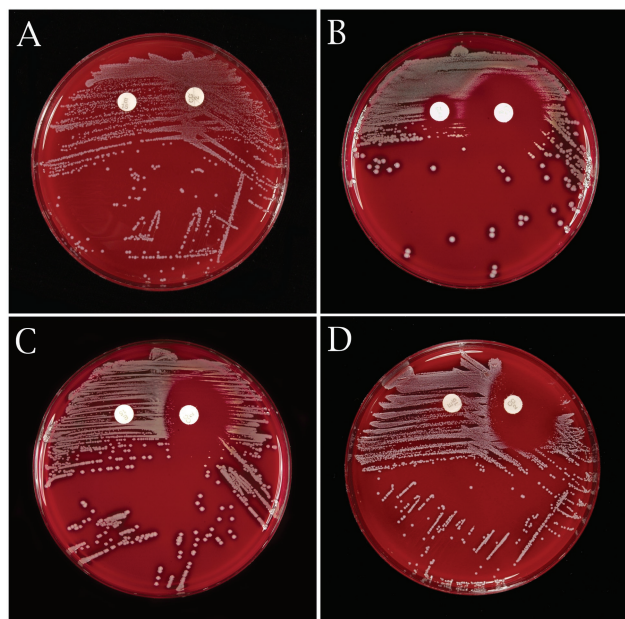


FIG. 1. Purity plate disk induction testing. (A) Constitutive clindamycin resistance by purity plate testing. Growth extends to the edge of the clindamycin disk with an *S. auricularis* strain carrying *erm(A)*. (B) Negative disk induction test indicating the absence of inducible clindamycin resistance, i.e., no blunting of the clindamycin zone adjacent to the erythromycin disk with an *S. aureus* carrying *msr(A)*. (C) Positive disk induction test indicating inducible clindamycin resistance. Blunting of the clindamycin inhibition zone adjacent to the erythromycin disk (D-zone effect) with an *S. epidermidis* carrying *erm(C)*. (D) Positive disk induction test indicating inducible clindamycin resistance with an *S. aureus* carrying *erm(C)*.

ported as clindamycin resistant by VITEK 2. One *S. simulans* isolate contained only *msr(A)* but showed constitutive clindamycin resistance by disk diffusion testing by an unknown mechanism and yielded a MIC of 1 $\mu\text{g}/\text{ml}$ in the VITEK 2. None of the isolates carrying only *msr(A)* showed flattening of the clindamycin zone on the purity plate tests.

This study demonstrated that inducible clindamycin resistance can be easily detected by disk induction testing on standard sheep blood agar plates used for verification of inoculum purity in conjunction with an automated susceptibility test system. It is important to note that clindamycin zone flattening, not zone size, is assessed on the purity plate. Thus, the use of standard sheep blood agar rather than Mueller-Hinton agar suffices for recognition of inducible resistance. While we evaluated purity plate induction testing with the bioMerieux VITEK 2 system in this study, any broth-based antimicrobial susceptibility test method, manual or automated, should be amenable to this approach. We evaluated an approximately 1:10 dilution of a 0.5 McFarland standard as the inoculum source. We also found that direct plating of the 0.5 McFarland standard or a dilution of up to 1:250 of the McFarland standard worked equally well (data not depicted).

The goal of routine detection of clindamycin resistance among clinically significant staphylococcal isolates is twofold. First, prior investigations have demonstrated the potential for clinical failures when patients infected with MLS_B strains are

TABLE 1. Purity plate disk induction testing for clindamycin resistance compared to standard disk induction testing on Mueller-Hinton agar and results of VITEK 2 susceptibility testing

Species (no. of isolates)	Phenotype ^a	No. of strains	No. (%) of strains detected by purity plate induction test ^b	No. (%) of strains detected by VITEK 2 alone ^b
<i>S. aureus</i> (75)	C ^S	28	0	0
	C ^{R-Ind}	22 ^c	22 (100)	0
	C ^{R-Const}	25	25 ^d (100)	25 (100)
Coagulase-negative staphylococci (75)	C ^S	12	0	0 ^e
	C ^{R-Ind}	26	26 (100)	0 ^e
	C ^{R-Const}	37	37 (100)	37 ^f (100)

^a Determined by standard disk diffusion test and disk induction test with a disk spacing of 20 mm on Mueller-Hinton agar. C^S, clindamycin susceptible; C^{R-Ind}, inducible MLS_B resistance to clindamycin; C^{R-Const}, constitutive MLS_B resistance to clindamycin.

^b Detection of clindamycin resistance, reported as either intermediate or resistant for VITEK 2 and either induced (C^{R-Ind} isolates, showing blunting of zone), or constitutive (C^{R-Const} isolates, showing growth to the edge of the clindamycin disk) on the purity plate.

^c Includes two isolates with intermediate MICs of erythromycin by VITEK 2 (1 and 4 $\mu\text{g}/\text{ml}$); both of these isolates were purity plate screen and disk induction test positive.

^d One *S. epidermidis* and seven *S. aureus* isolates showed blunting of an outer zone and heavy inner growth to the edge of the disk. All of these isolates were reported as resistant by VITEK 2 and contained *erm(A)*.

^e Of the 75 coagulase-negative staphylococcal isolates, four had insufficient growth for testing on VITEK 2 (three C^S and one C^{R-Ind}).

^f A very major error was reported for one isolate (VITEK 2 erythromycin MIC, 0.5 $\mu\text{g}/\text{ml}$; resistant by the standard disk diffusion test).

treated with clindamycin for various types of infections (1, 4, 10). However, to categorically regard all macrolide-resistant staphylococci as clindamycin resistant would deny potentially safe and effective therapy for patients infected with isolates that carry only the macrolide efflux mechanism. The percentage of clinical staphylococcal isolates that demonstrate macrolide efflux compared to MLS_B resistance may vary widely by geographic location or patient group (2, 3, 4, 5, 6, 8, 9, 10). Therefore, the second benefit of routine testing for inducible clindamycin resistance is to clearly identify those strains that remain susceptible to clindamycin despite macrolide resistance. For these reasons, routine testing of significant staphylococcal isolates for inducible clindamycin resistance is now advocated by the National Committee for Clinical Laboratory Standards (7).

This study was supported in part by a grant from bioMerieux, Inc., Durham, N.C.

REFERENCES

- Drinkovic, D., E. R. Fuller, K. P. Shore, D. J. Holland, and R. Ellis-Pegler. 2001. Clindamycin treatment of *Staphylococcus aureus* expressing inducible clindamycin resistance. *J. Antimicrob. Chemother.* **48**:315–316.
- Eady, E. A., J. I. Ross, J. L. Tipper, C. E. Walters, J. H. Cove, and W. C. Noble. 1993. Distribution of genes encoding erythromycin ribosomal methylases and an erythromycin efflux pump in epidemiologically distinct groups of staphylococci. *J. Antimicrob. Chemother.* **31**:211–217.
- Fiebelkorn, K. R., S. A. Crawford, M. L. McElmeel, and J. H. Jorgensen. 2003. Practical disk diffusion method for detection of inducible clindamycin resistance in *Staphylococcus aureus* and coagulase-negative staphylococci. *J. Clin. Microbiol.* **41**:4740–4744.
- Frank, A. L., J. F. Marcinak, P. D. Mahgat, J. T. Tjhhio, S. Kelkar, P. C. Schreckenberger, and J. P. Quinn. 2002. Clindamycin treatment of methicillin-resistant *Staphylococcus aureus* infections in children. *Pediatr. Infect. Dis. J.* **21**:530–534.
- Hamilton-Miller, J. M. T., and S. Shah. 2000. Patterns of phenotypic resistance to the macrolide-lincosamide-ketolide-streptogramin group of antibiotics in staphylococci. *J. Antimicrob. Chemother.* **46**:941–949.

6. **Jensen, W. D., S. Thakker-Varia, D. T. Dubin, and M. P. Weinstein.** 1987. Prevalence of macrolide-lincosamide-streptogramin B resistance and *erm* gene classes among clinical strains of staphylococci and streptococci. *Antimicrob. Agents Chemother.* **31**:883–888.
7. **National Committee for Clinical Laboratory Standards.** 2004. Performance standards for antimicrobial susceptibility tests. Supplement M100–S14. National Committee for Clinical Laboratory Standards, Wayne, Pa.
8. **Nicola, F. G., L. K. McDougal, J. W. Biddle, and F. C. Tenover.** 1998. Characterization of erythromycin-resistant isolates of *Staphylococcus aureus* recovered in the United States from 1958 through 1969. *Antimicrob. Agents Chemother.* **42**:3024–3027.
9. **Sanchez, M. L., K. K. Flint, and R. N. Jones.** 1993. Occurrence of macrolide-lincosamide-streptogramin resistances among staphylococcal clinical isolates at a university medical center. *Diagn. Microbiol. Infect. Dis.* **16**:205–213.
10. **Siberry, G. K., T. Tekle, K. Carroll, and J. Dick.** 2003. Failure of clindamycin treatment of methicillin-resistant *Staphylococcus aureus* expressing inducible clindamycin resistance in vitro. *Clin. Infect. Dis.* **37**:1257–1260.